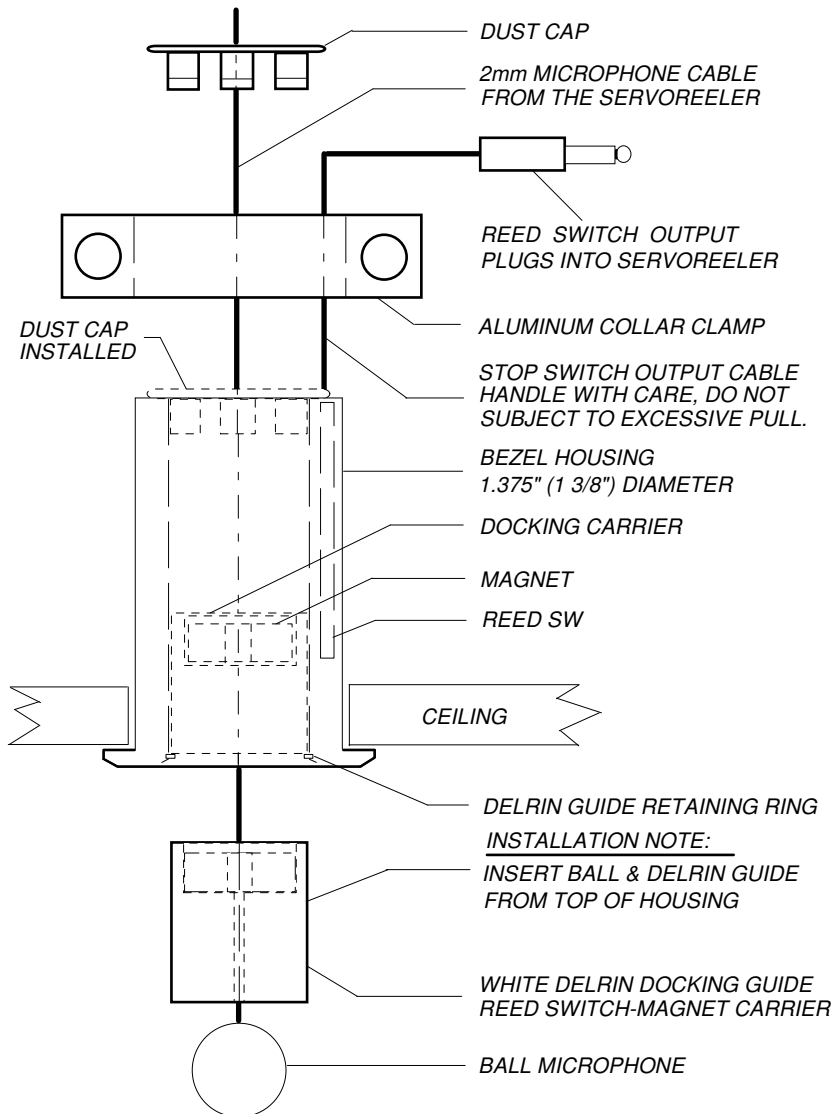


SERVOREELER SYSTEMS

XEDIT Corporation

218-31 Ninety Seventh Avenue
Queens Village, New York 11429
Web site: www.servoreelers.com
E-mail: srsystems@servoreelers.com
Tel: (718) 464-9400 Fax: 464-9435



TO INSTALL A CEILING BEZEL ASSEMBLY WITH A BALL MICROPHONE:

- 1- Drill or carefully cut a clean round hole to accept the 1.375" (35mm) Diameter Bezel Housing through the ceiling tile. **The cable exit point at the bottom of the Servoreeler must be in direct line with the centerline of the bezel.**
 - 2- Carefully shape the hole, keeping it as tight as possible, so that the Bezel flange will completely cover the cut edges.
 - 3- Insert the Bezel assembly into the prepared hole: slide the collar clamp over the top of the Bezel housing, making sure to first pull the small control cable through the collar clamp and tighten the clamp screw with the ceiling tile tightly clamped between the Bezel flange and the collar clamp. When this is completed, the Bezel assembly will be securely mounted onto the tile.
 - 4- Slip the Ball Microphone and docking slide into the bore of the Bezel, allowing this assembly to drop against the internal stop ring.
 - 5- Confirm that the Bezel housing is clean and that the docking slide moves freely up and down.
 - 6- Slide the dust cap down, snapping it into the top of the Bezel housing.
 - 7- Pull the cable up activating the docking slide and release to ensure its free motion.
- CAUTION: Avoid excessive pull on the Bezel Switch cable during the installation. Dress the switch cable so that it is secured away from the path of the moving microphone cable.**

Finally: Plug the bezel switch cable into the jack at the top of the Servoreeler and perform an operational test to ensure that the bezel switch is controlling the reeler stop point reliably; hard or shallow docking may be adjusted by trimming the reeler retraction speed.

Make sure that the Servoreeler is mounted far enough away from the bezel, so that the Servoreeler internal full limit sensor does not stop the Reeler before the Bezel switch can activate. **It is preferable to simply note the cable length to the microphone prior to installing the Reeler and selecting a mounting position a few inches further from the bezel than this reference dimension.**

The full limit stop point may also be trimmed by adjusting the multi-turn full limit adjustment on the Servoreeler control board. Refer to the Servoreeler installation instructions if this is required.

TEST THE INTERNAL REED SWITCH: Slide the docking slide towards the top of the Bezel housing; contact closure should begin just after about 1/4 inch of upward travel of the docking slide. **NOTE:** It is highly recommended that the area around and above the Bezel assembly be vacuumed before and after the installation to assure that any possible debris and solid contaminants are removed. Obviously, any debris infiltrating into the Bezel can impair its movement and possibly prevent normal reeler shutoff. In addition, please note that the Docking slide contains a reed switch-activating magnet. This magnet will attract metal fillings. It is therefore important to double check that the area is clean and that the slide is absolutely free to move.

*BE CERTAIN THAT THE MOVING MICROPHONE CABLE DOES NOT ABRASE AGAINST ANY STRUCTURE.
Should you have any questions, please call us at: (800) 431-8900*