

SERVOREELER SYSTEMS

XEDIT Corporation

218-31 Ninety Seventh Avenue

Queens Village, New York 11429

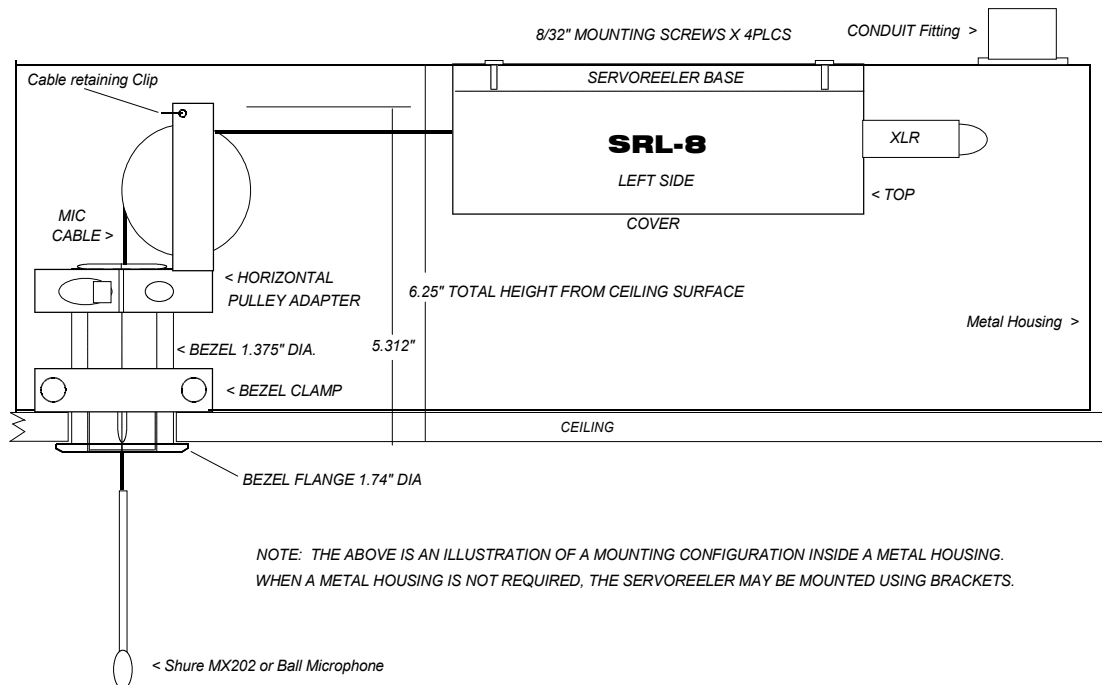
Web site: www.servoreelers.com

e-mail: srsystems@servoreelers.com

Tel: (718) 464-9400 Fax: 464-9435

Horizontal Pulley Adapter INSTRUCTIONS

DESCRIPTION: The horizontal pulley adapter is provided for use with our BZ-1 ceiling Bezel. It is intended for use when the space over the ceiling is too confined to install a Servoreeler in the normal vertical orientation. It is employed as drawn below by clamping to the top of the BZ-1. Its use permits the Servoreeler to be mounted in a horizontal orientation anywhere within a 360 degree circle of the bezel center. The Servoreeler needs to be mounted at a height or angle that will permit a direct path from the turn pulley to the Cable entry/exit point on the Servoreeler. The Servoreeler may be mounted in any orientation so long as this alignment is achieved. In the example below, the SRL-8 is mounted inside an optional metal enclosure when conduit fittings are required. Many other configurations are possible.



INSTALLATION of the Horizontal Pulley adapter:

- 1- Follow the instructions for the installation of the Bezel assembly.
- 2- Please note that the Servoreeler contains internal limits so that when its storage reel is full, it stops automatically-leaving a length of cable between the housing and the microphone. Measure this length and be sure that the distance between the Servoreeler and the Bezel is greater than this measurement. This will permit the limit switch in the Bezel to take priority in stopping the microphone when it is retracted.
- 3- Remove and save the cable retaining clip at the top of the pulley support.
- 4- Move the black magnet carrier and dust cap close to the microphone and then pass these three components through the top (pulley side) of the adapter assembly in the following order: Microphone, Magnet carrier, Dust cap.
- 5- Moving the Horizontal pulley adapter to the side, pass these same components into the top of the Bezel. Allow the white magnet carrier to drop and stop against the internal retaining ring; install the dust cap into the top of the bezel; then slip the Horizontal adapter assembly clamp down onto the top of the bezel as far as it will go.
- 6- Tighten the adapter clamp orienting the adapter pulley directly towards the Servoreeler.
- 7- Drape the microphone cable over the pulley and insert the cable retaining clip so that the cable is captive under it and cannot derail due to a loss of tension.
CAUTION: Be certain to plug the sensor cable from the Bezel into the jack on the Servoreeler prior to testing operation. Make certain that the cable has a clear, clean path and will not bind or abrade against any stationary object when in motion.

Should you have any questions, Please Call us at: 800 431-8900