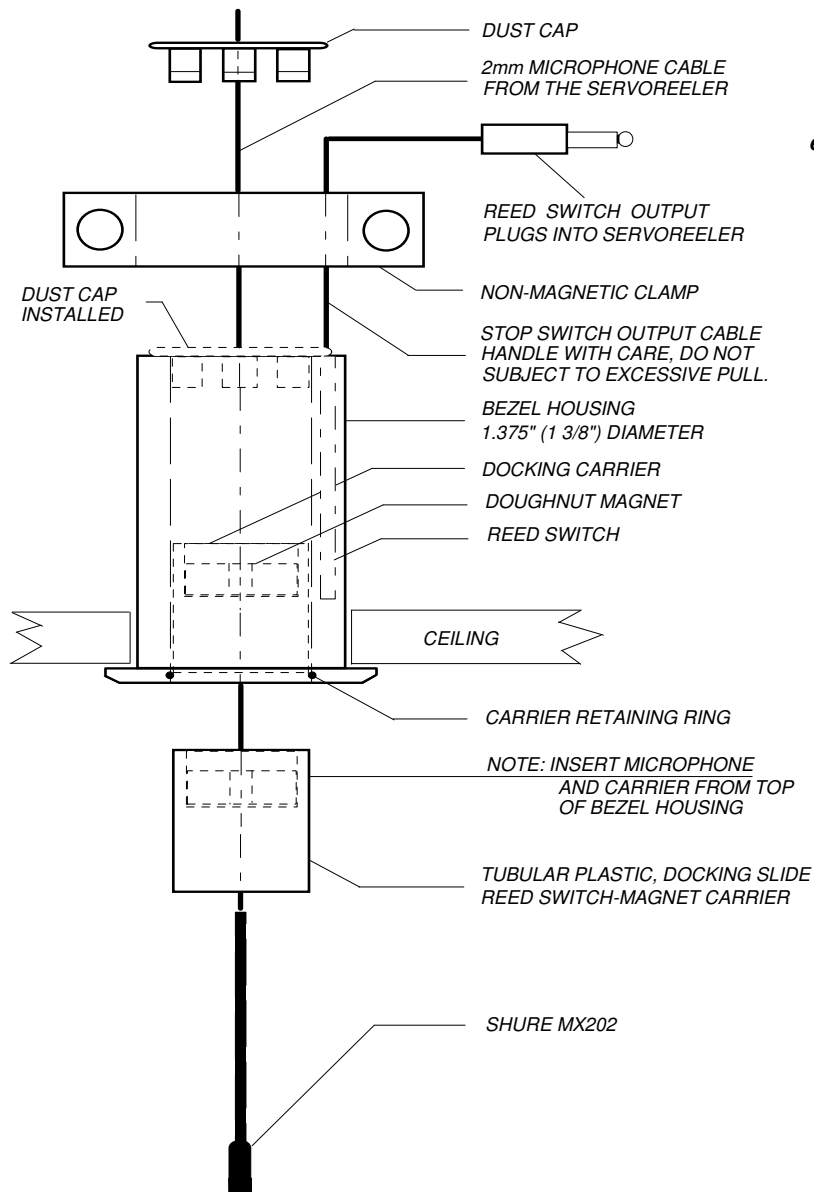


SERVOREELER SYSTEMS

XEDIT Corporation

218-31 Ninety Seventh Avenue
Queens Village, New York 11429
Web site: www.servoreelers.com
e-mail: srsystems@servoreelers.com
Tel: (718) 464-9400 Fax: 464-9435



TO INSTALL A CEILING BEZEL ASSEMBLY with a Shure MX202

1- Drill or carefully cut a clean round hole to accept the 1.375" (1-3/8") Diameter Bezel Housing through the ceiling tile. **Locate the hole in line with the cable exit point at the bottom of the Servoreeler** 2- Carefully shape the hole, keeping it as tight as possible, so that the Bezel flange will completely cover the cut edges. 3- Insert the Bezel assembly into the prepared hole; sliding the collar clamp over the top of the Bezel housing making sure to first pull the small control cable through the collar clamp and tightening the clamp screw with the ceiling tile tightly clamped between the Bezel flange and the collar clamp. When this is completed, the Bezel assembly should be securely mounted onto the tile. 4- Slip the MX202 Microphone and Docking slide into the bore of the Bezel, rotating the docking slide until the index slot engages the index pin inside the bezel body. 5- Confirm that the Bezel housing is clean and that the Docking slide moves freely up and down; then, 6- Slide the dust cap down, orienting it properly to clear the control cable outlet, snap into the top of the Bezel housing. 7- Pull the cable up activating the docking slide and release to assure its free motion. Finally: Plug the bezel switch cable into the jack at the top of the Servoreeler and perform an operational test to assure that the bezel switch is controlling the reeler stop point reliably; hard or shallow docking may be adjusted by trimming the reeler retraction speed. Make sure that the Servoreeler is mounted far enough away from the Bezel, so that the Servoreeler Full Limit sensor does not stop the Reeler before the Bezel switch can activate. The full limit stop point may also be trimmed by adjusting the multi-turn full limit adjustment on the Servoreeler control board. Refer to Reeler installation instructions if this is required. It is preferable to simply note the cable length to the microphone prior to installing the Reeler and selecting a mounting position a few inches longer than this dimension.

TEST THE INTERNAL REED SWITCH: Slide the docking slide toward the top of the Bezel housing; contact closure should begin just after about 1.75" of upward travel of the docking slide.

NOTE: It is highly recommended that the area around and above the Bezel assembly be vacuumed before and after the installation to assure that any possible debris and solid contaminants are removed. Obviously, any debris infiltrating into the Bezel could impair its movement and possibly prevent normal reeler shutoff. In addition, please note that the Docking slide contains a small reed switch activating magnet. This magnet will attract metal fillings, therefore it is important to double check that the area is clean and that the slide is absolutely free to move.

BE CERTAIN THAT THE MOVING MICROPHONE CABLE DOES NOT ABRABE AGAINST ANY STRUCTURE.